

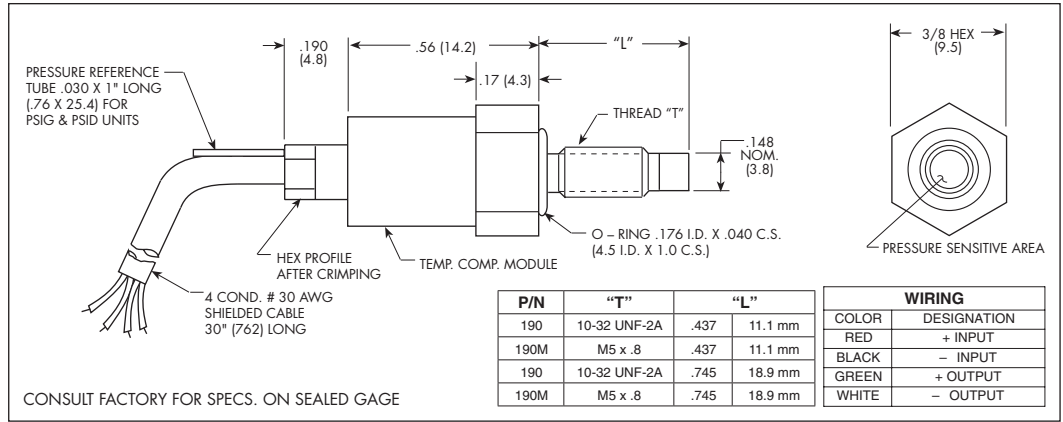
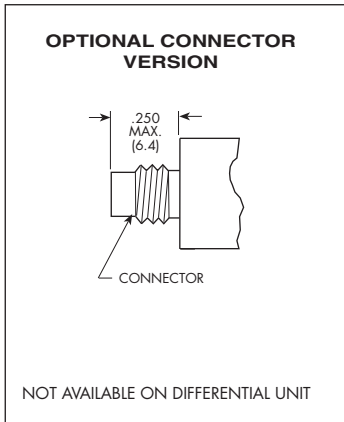
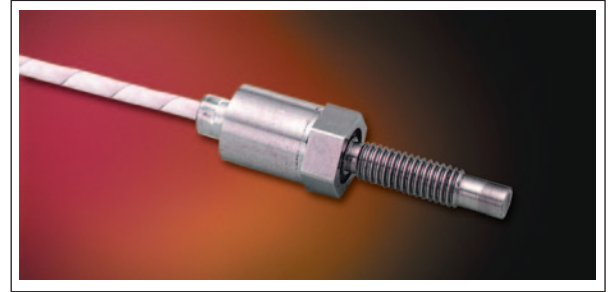


# MINIATURE HIGH TEMPERATURE RUGGEDIZED IS® PRESSURE TRANSDUCER

## XTME-190 (M) SERIES

- High Natural Frequency
- Robust Construction
- Excellent Stability
- Inorganically Bonded Sensor
- High Temperature Up to 450°F

The XTME-190 Series transducers are physically identical to the XTM-190 Series. High temperature material and assembly processes allow continuous use at maximum operating temperatures of +450°F (+232°C).



<b>INPUT</b> Pressure Range	1.7 25	3.5 50	7 100	17 250	35 500	70 1000	170 2500	350 BAR 5000 PSI
Operational Mode	Absolute, Gage, Sealed Gage, Differential							
Over Pressure	3.5 50	7 100	14 200	35 500	70 1000	140 2000	210 3000	420 BAR 6000 PSI
Burst Pressure	3 Times Rated Pressure to a Maximum of 6500 PSI (450 BAR)							
Pressure Media	Any Liquid or Gas Compatible With 17-4 PH or 316 Stainless Steel							
Rated Electrical Excitation	10 VDC							
Maximum Electrical Excitation	15 VDC							
Input Impedance	650 Ohms (Min.)							
<b>OUTPUT</b> Output Impedance	1000 Ohms (Nom.)							
Full Scale Output (FSO)	75 mV (Nom.)							
Residual Unbalance	± 5 mV (Typ.)							
Combined Non-Linearity, Hysteresis and Repeatability	±1% FSO BFSL (Typ.)							
Resolution	Infinitesimal							
Natural Frequency (KHz) (Typ.)	120	210	285	425	550	720	910	1120
Acceleration Sensitivity % FS/g Perpendicular	1.9x10 <sup>-3</sup>	1.0x10 <sup>-3</sup>	5.2x10 <sup>-4</sup>	2.2x10 <sup>-4</sup>	1.1x10 <sup>-4</sup>	6.2x10 <sup>-5</sup>	2.6x10 <sup>-5</sup>	1.5x10 <sup>-5</sup>
Transverse	5.0x10 <sup>-5</sup>	3.1x10 <sup>-5</sup>	2.0x10 <sup>-5</sup>	1.0x10 <sup>-5</sup>	7.0x10 <sup>-6</sup>	4.3x10 <sup>-6</sup>	2.3x10 <sup>-6</sup>	1.5x10 <sup>-6</sup>
Insulation Resistance	100 Megohm Min. @ 50 VDC							
<b>ENVIRONMENTAL</b> Operating Temperature Range	-65°F to +450°F (-55°C to +235°C)							
Compensated Temperature Range	+80°F to 450°F (25°C to +235°C)							
Thermal Zero Shift	Within 10% Over Compensated Temperature Range (Typ.)							
Thermal Sensitivity Shift	Within 7% Over Compensated Temperature Range (Typ.)							
Linear Vibration	100g Peak, Sine Up to 5000 Hz							
Humidity	100% Relative Humidity							
<b>PHYSICAL</b> Electrical Connection	4 Conductor 30 AWG Shielded Cable 30" Long							
Weight	8 Grams (Nom.) Excluding Cable							
Pressure Sensing Principle	Inorganically Bonded Piezoresistive Sensor							
Mounting Torque	15 Inch-Pounds (Max.)							

Note: Custom pressure ranges, accuracies and mechanical configurations available. Dimensions are in inches. Dimensions in parenthesis are in millimeters. Continuous development and refinement of our products may result in specification changes without notice - all dimensions nominal. (H)